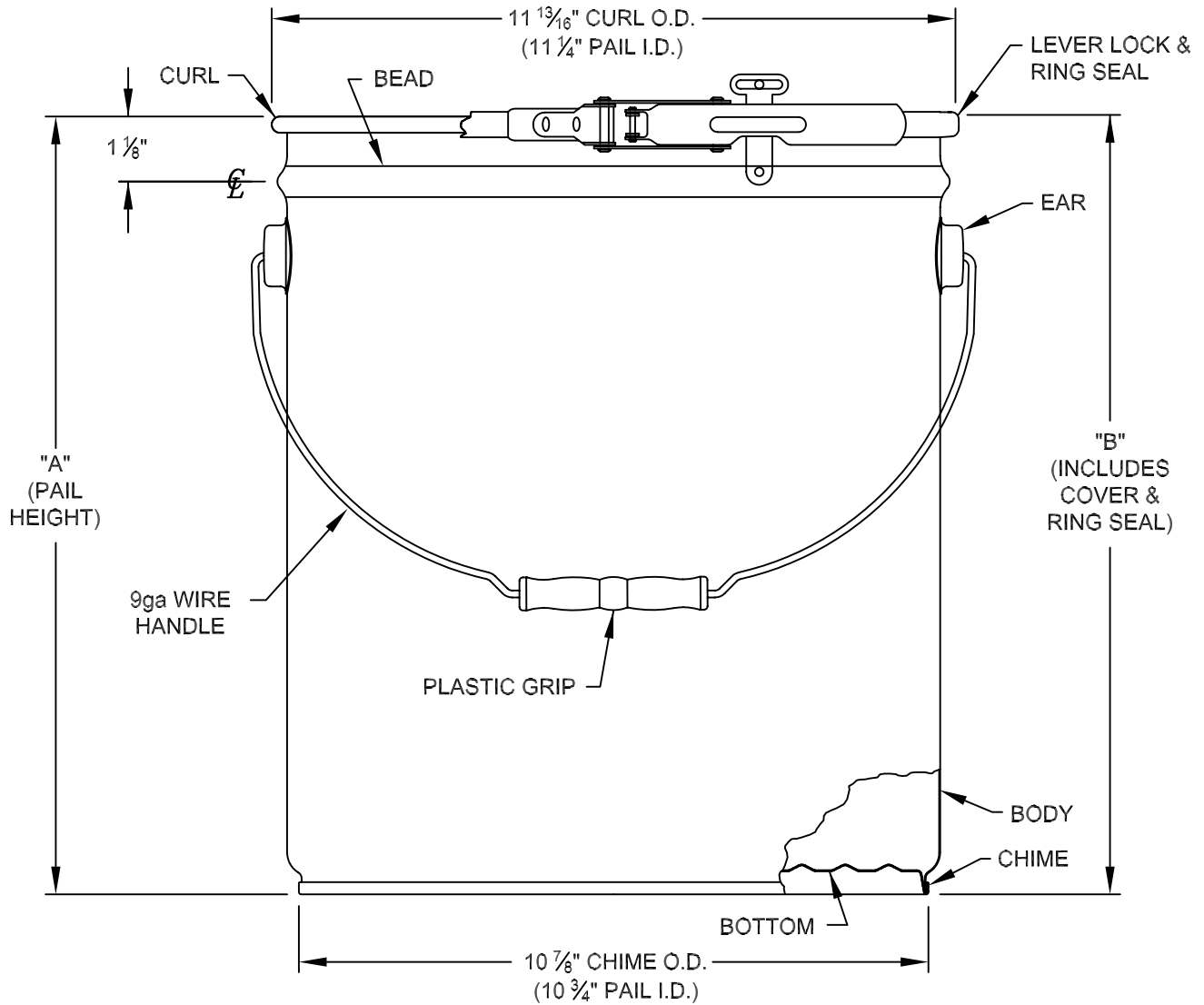


# Necked-in Straight Side Pail (w/Ring Seal Cover)



- NOTES:**
1. Can be made in any gallon or liter size. (2.5-7.0 gal)
  2. Available without Bead.
  3. Overall Outage is 4% of Rated Capacity
  4. All dimensions are  $\pm 1/16$ "

DIMENSION	CAPACITY (GALLONS)									
	2 $\frac{1}{2}$	3	3 $\frac{1}{2}$	4	5	20 L	5 $\frac{1}{2}$	6	6 $\frac{1}{2}$	7
"A"	7 $\frac{1}{16}$ "	8 $\frac{7}{16}$ "	9 $\frac{5}{8}$ "	10 $\frac{15}{16}$ "	13 $\frac{3}{8}$ "	14"	14 $\frac{9}{16}$ "	15 $\frac{3}{4}$ "	16 $\frac{3}{8}$ "	17 $\frac{3}{4}$ "
"B"	7 $\frac{1}{4}$ "	8 $\frac{5}{8}$ "	9 $\frac{13}{16}$ "	11 $\frac{1}{8}$ "	13 $\frac{9}{16}$ "	14 $\frac{3}{16}$ "	14 $\frac{3}{4}$ "	15 $\frac{15}{16}$ "	16 $\frac{9}{16}$ "	17 $\frac{15}{16}$ "