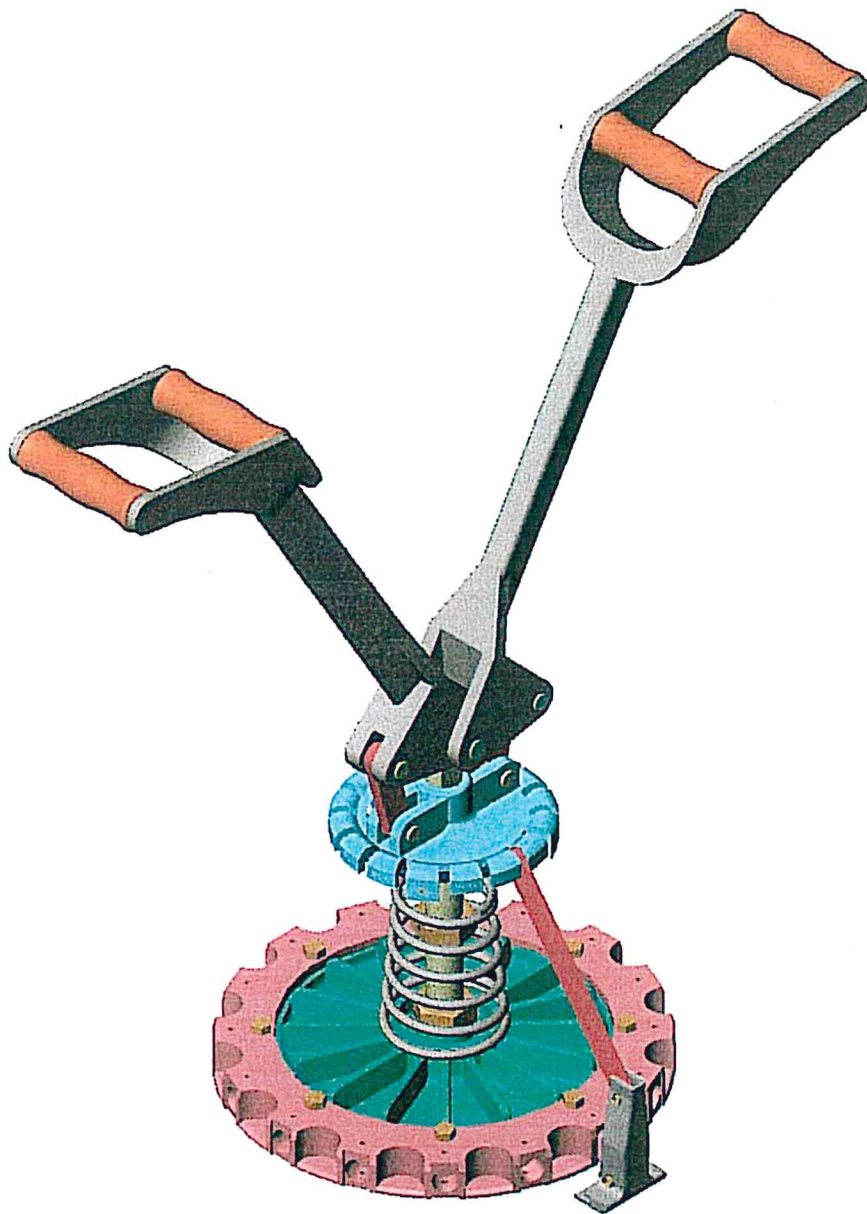




MODEL 910H-HP 11 1/4"
HAND OPERATED CLOSING TOOL



CLOSING OPERATION GUIDE

HIGH PERFORMANCE MANUAL CLOSING TOOLS

Model 910H-HP

This tool is designed to close U.N. Steel 16 Lug covers to a steel pail body. Carando's closing tool is preset at the factory for an 11-1/4" I.D. pail and should not require any further adjustments in the field.

This tool **WILL NOT SUCCESSFULLY NOR SAFELY CLOSE ANY OTHER SIZE CONTAINER. DO NOT ATTEMPT TO ADJUST THE TOOL FOR ANY OTHER SIZE CONTAINER OR LID.**

1. Place a correctly sized steel lug cover on the steel pail.
2. Position the closing tool on the cover allowing the full weight of the tool to rest on the cover and pail assembly.
3. Actuate tool by depressing the two (2) handles in a downward motion until the tool completes the down stroke.
4. Release the handles and allow the tool to return to its full open position.
5. Remove the tool from the pail and cover assembly.
6. Inspect the assembly for proper and acceptable closure.

NOTE:

IT IS THE SHIPPER'S RESPONSIBILITY TO INSURE THAT THE CLOSURE CONFORMS TO THE APPLICABLE REGULATION FOR THE PRODUCT PACKAGING. CARANDO TECHNOLOGIES, INC. ASSUMES NO LIABILITY FOR INCORRECTLY PACKAGED MATERIALS OR FAILURE OF THE PAIL AND LUG COVER ASSEMBLY.

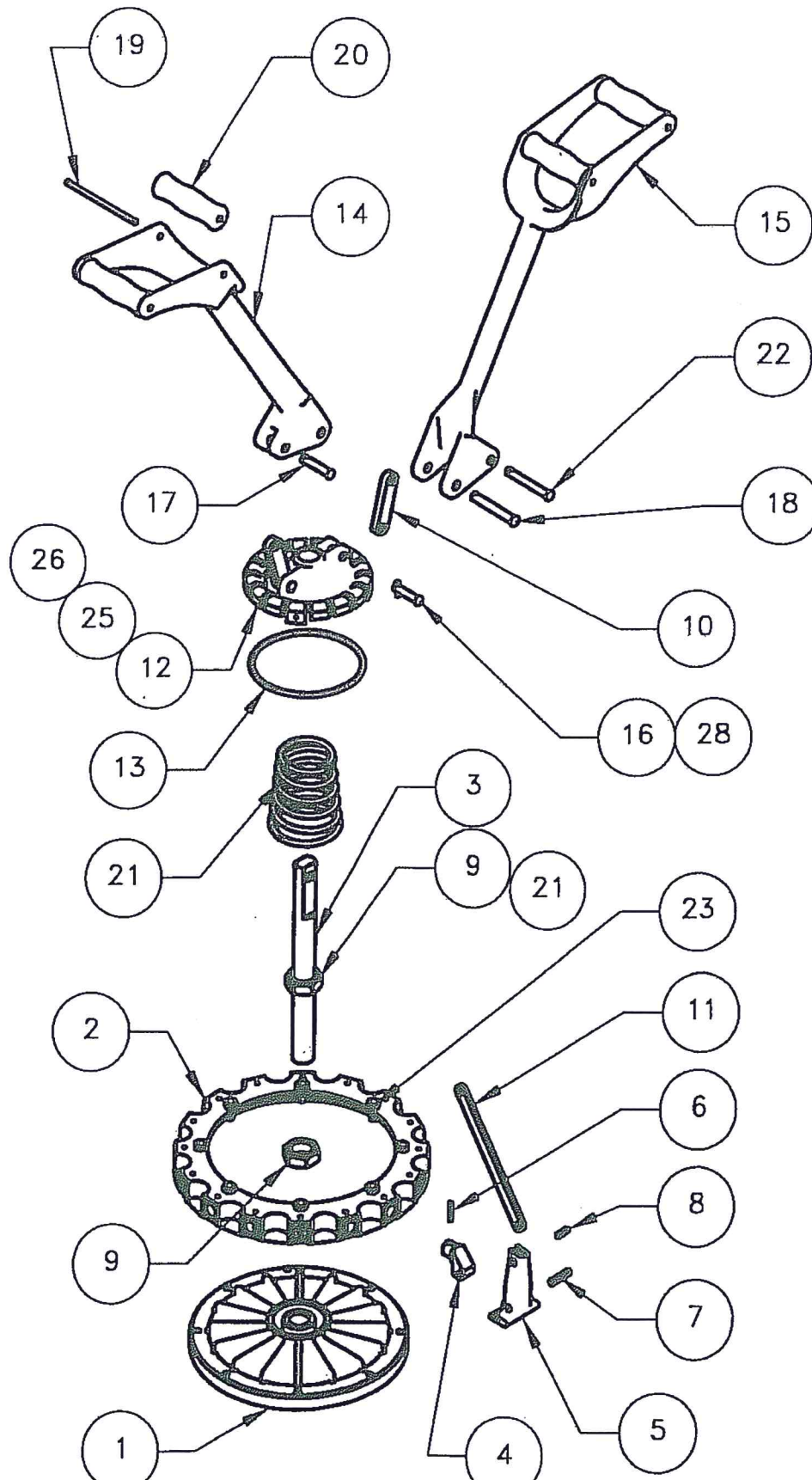
*****CAUTION*****

THIS TOOL IS NOT A NON-SPARKING TOOL.

PINCH POINTS ARE PREVALENT.

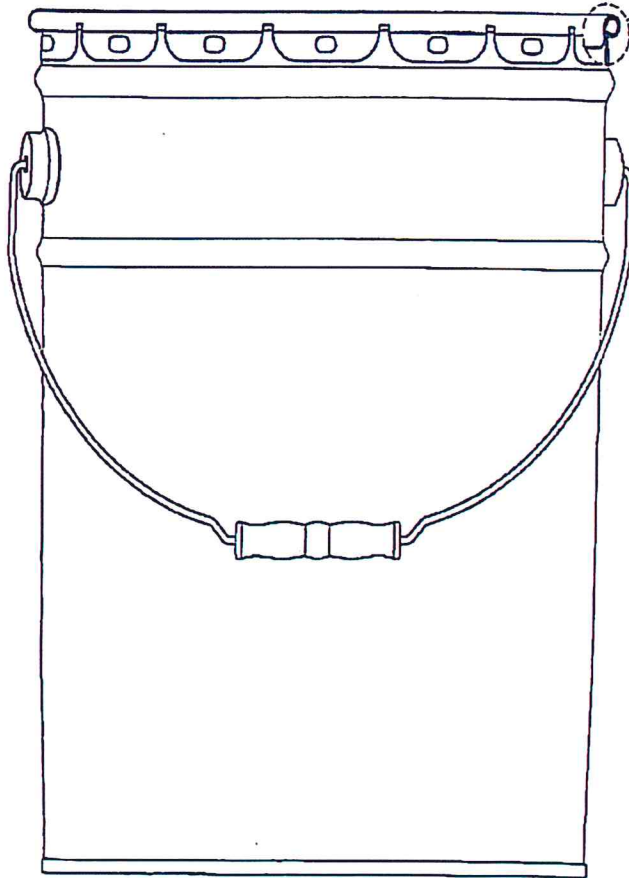
BOTH HANDS MUST GRIP THE HANDLE GRIPS AT ALL TIMES DURING THE OPERATION OF THE TOOL.

MODEL 910-HP 11 1/4" HIGH PERFORMANCE
HAND OPERATED CLOSING TOOL

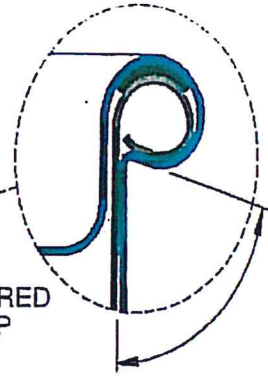


Open Head Closing Instructions

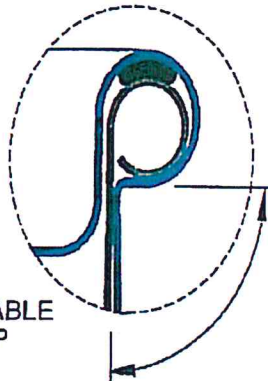
PROPER PAIL CRIMPING



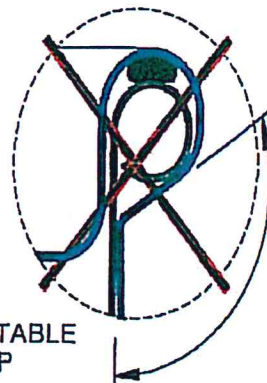
PREFERRED
CRIMP



ACCEPTABLE
CRIMP



UNACCEPTABLE
CRIMP



NOTICE OF DISCLAIMER

DUE TO THE WIDE VARIETY OF STEEL PAIL CONSTRUCTION AND DESIGN METHODS UTILIZED WITHIN THE STEEL PAIL INDUSTRY, BOTH DOMESTIC AND INTERNATIONAL, CARANDO TECHNOLOGIES PROVIDES NO WARRANTY, EXPRESSED OR IMPLIED, AS TO CLOSURE PERFORMANCE OF OUR CLOSING TOOLS MEETING ANY REGULATORY AGENCY'S CLOSURE SPECIFICATIONS.

IT IS THE SHIPPER'S RESPONSIBILITY TO ENSURE THAT THE CLOSURE CONFORMS TO THE APPLICABLE REGULATION FOR THE SPECIFIC PRODUCT PACKAGE. THE SHIPPER AND THE PAIL MANUFACTURER WILL NEED TO PERFORM THE REQUISITE REGULATORY TESTING.